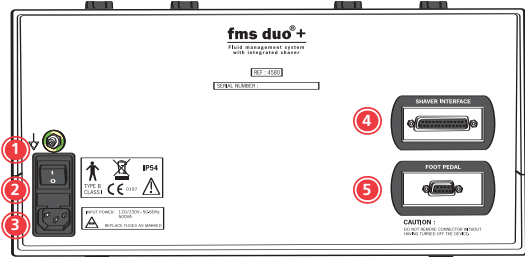


# fms duo<sup>®</sup>+ Parts List

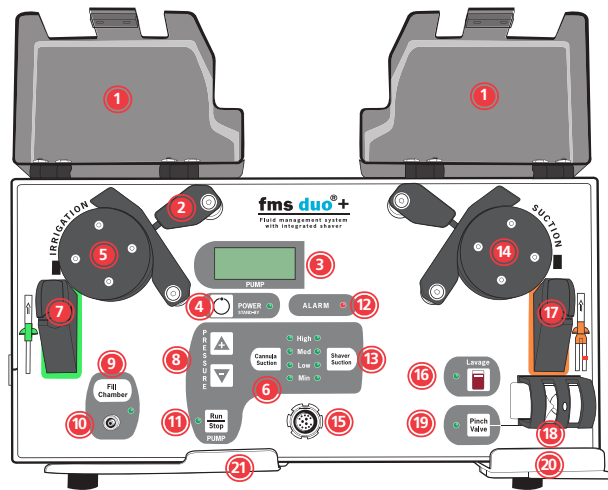
## Ports and Connectors on the Back

- 1 On/Off Switch
- 2 Fuses
- 3 Power Socket
- 4 Shaver Interface Port
- 5 Foot Pedal Port



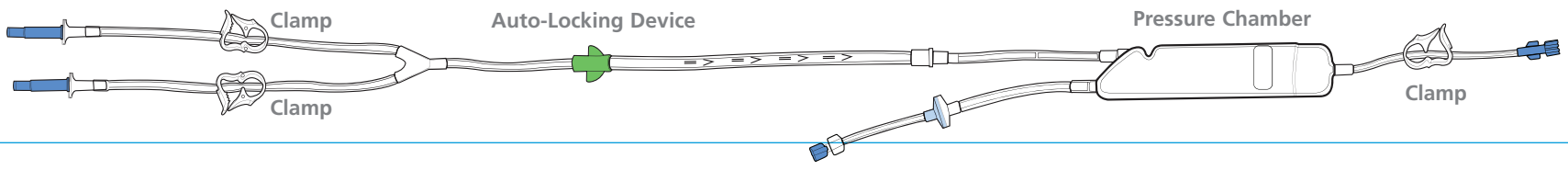
## Basic Features on the Front

- Transparent Safety Cover 1
- Tension Rocker Arm 2
- Pressure Display 3
- Power Button 4
- Irrigation Roller Pump 5
- Cannula Suction Setting Button 6
- Irrigation Auto-Locking Port 7
- Pressure Adjustment Buttons 8
- Fill Chamber Button 9
- Pressure Transducer Port 10
- Pump Run/Stop Button 11

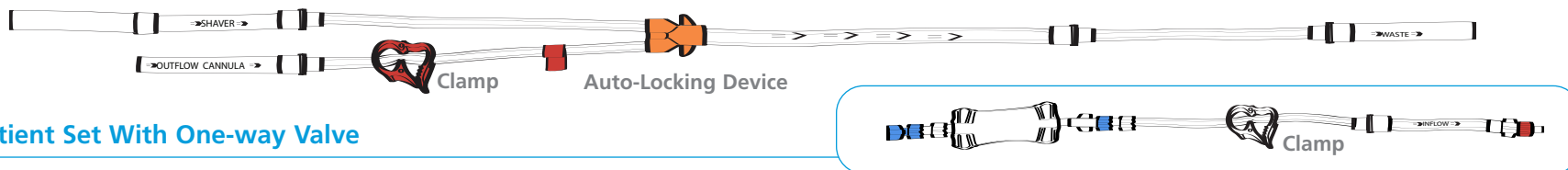


- 12 Alarm
- 13 Shaver Suction Setting Button
- 14 Suction Roller Pump
- 15 Shaver Hand Piece Port (FMS Shaver Only)
- 16 Lavage Mode Button
- 17 Patient Set Auto-Locking Port
- 18 Pinch Valve
- 19 Pinch Valve Button
- 20 Tube Holder
- 21 Fill Chamber Holder

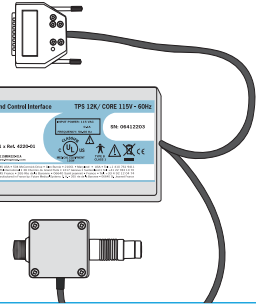
### One Day Set Irrigation Tube



### Patient Set With One-way Valve



### Shaver Interface Cable

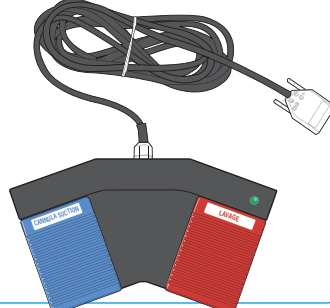


### fms duo<sup>®</sup>+ Power Cable

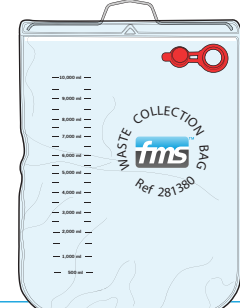


### Shaver Interface Power Cable

### Foot Pedal



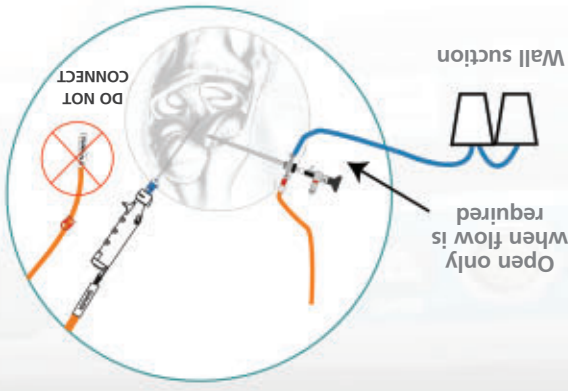
### Waste Collection Bag



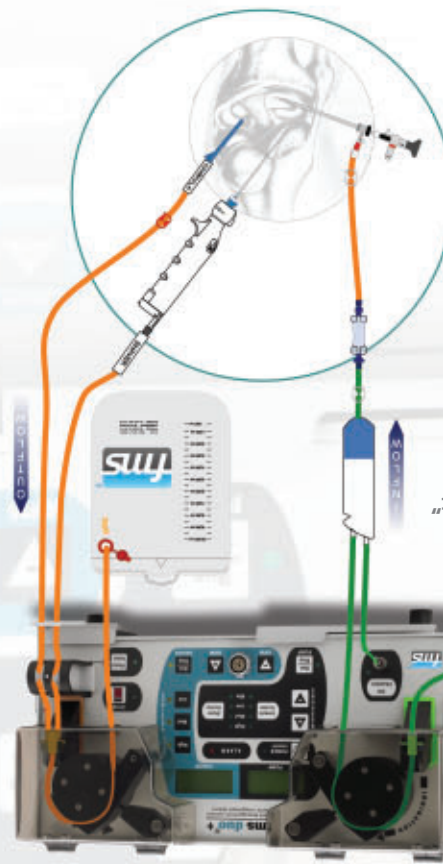
1-800-382-4682 | www.depuymittek.com  
 ©DePuy Mitek, Inc. 2008. All rights reserved. Printed in the USA.  
 PN 901015, Rev. A 03/08



### 2 Portals in the knee



### 3 Portals in the knee



Blue pedal increases flow only  
 Red pedal is a timed cycle to control bleeding



fms duo<sup>®</sup>+ Setup Diagram

## QUICK SETUP GUIDE

# fms duo<sup>®</sup>+

Fluid Management System with Shaver Interface  
 (Using Irrigation Tube as "One Day Set")

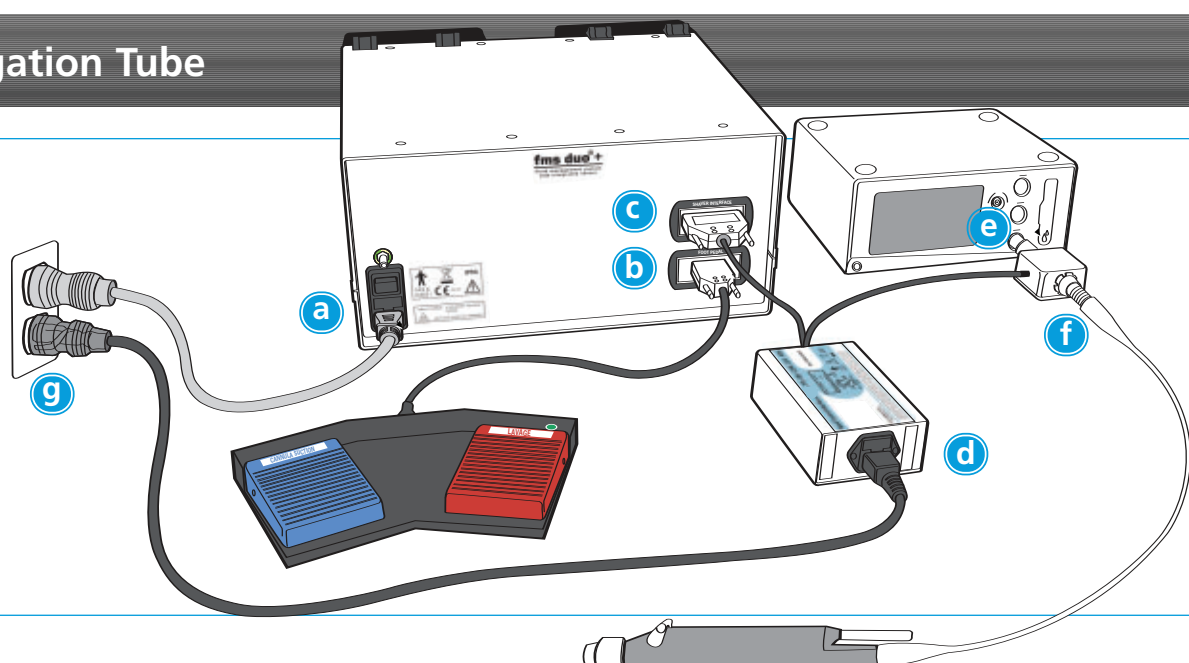


Sterile procedures should be followed wherever appropriate.  
 (Reference Product Manuals and Instructions For Use for complete instructions)

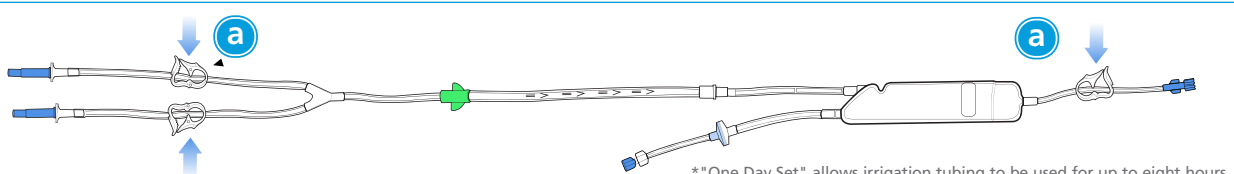


## A. Connecting the One Day Set Irrigation Tube

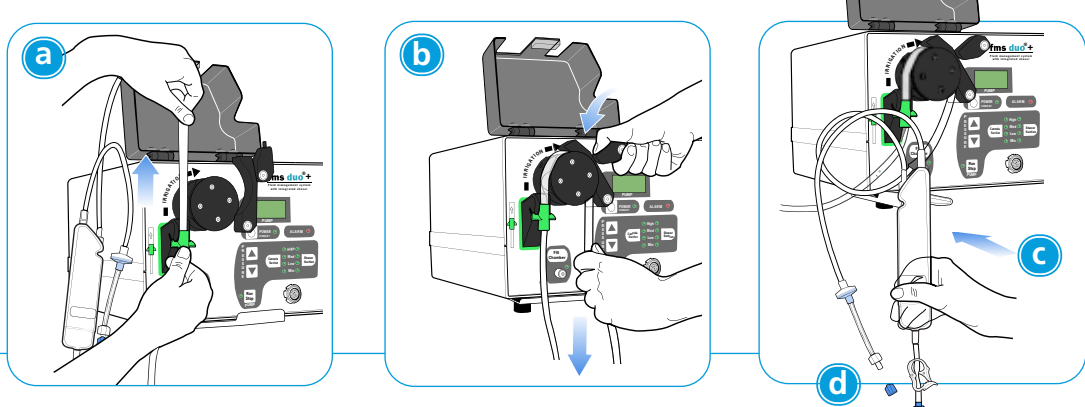
- 1 a: Insert power cable into socket.
- b: Attach the foot pedal connector to the port.
- c: Attach shaver interface connector to the port.
- d: Insert power cable into interface cable.
- e: Connect interface cable to shaver box.
- f: Connect shaver to interface cable.
- g: Insert power cables into wall socket.



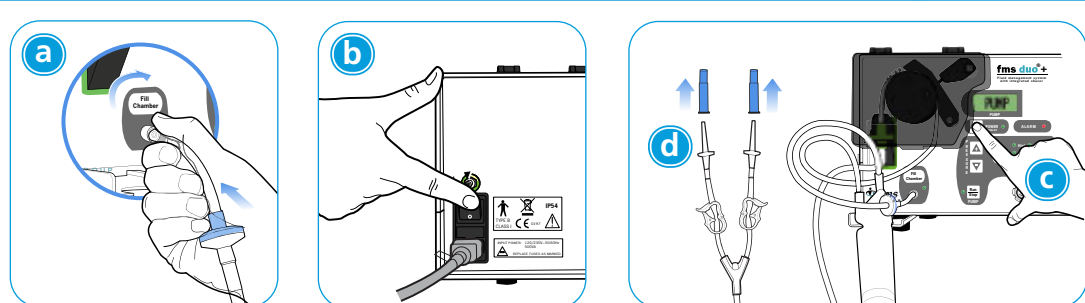
- 2 a: Remove One Day Set irrigation tube from the package and close three (3) white clamps on the One Day Set irrigation tube.



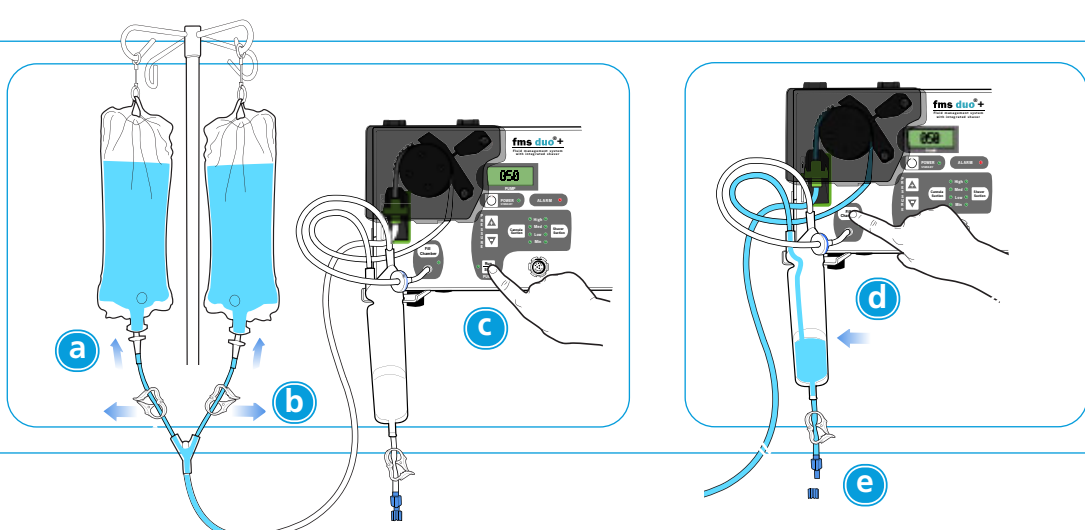
- 3 a: Lift lids and roller arm, then slide the green part of the tube into the auto-locking feature on the pump.
- b: Place and center the tube around the roller. Pull on the tube and close the tension rocker arm against the tube.
- c: Position the pressure chamber in the holder.
- d: Twist cap off of the pressure transducer tube.



- 4 a: Connect the pressure transducer tube into the fill chamber port. Turn clockwise until snug.
- b: Turn pump on by pressing I switch on back.
- c: Close lid and press **POWER STAND-BY** button.
- d: Remove caps off irrigation spikes.

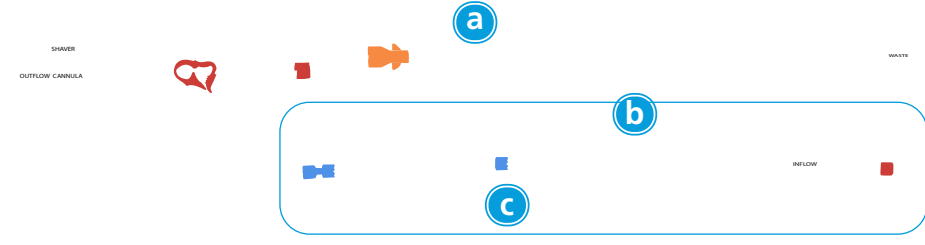


- 5 a: Insert spikes into irrigation bags.
- b: Open two (2) clamps on One Day Set irrigation tubes.
- c: Press **RUN STOP** button. Prime pump to fifty (50).
- d: Press **FILL CHAMBER** button to pump fluid into the chamber. Repeat until fluid rises to indicator window (1/3 full).
- e: Twist cap off One Day Set irrigation tube.

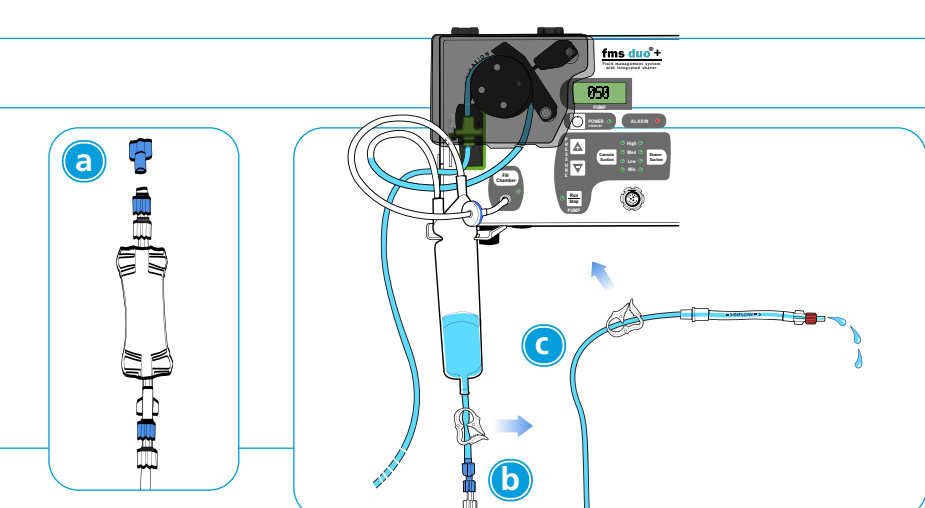


## B. Connecting the Patient Set (with One-way Valve)

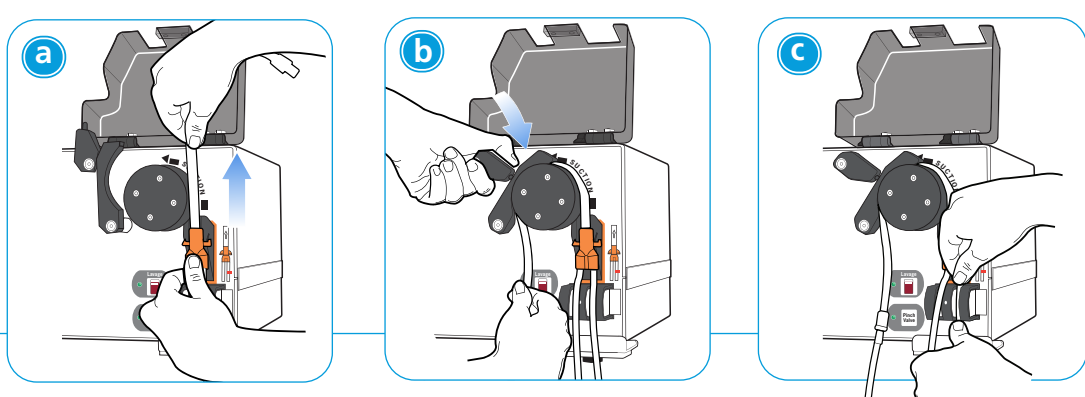
- 1 a: Pass the patient set tube labeled **WASTE** to the circulating nurse. Place ends of patient set tube marked **SHAVER** and **OUTFLOW CANNULA** on the sterile field.
- b: Remove the intermediary irrigation tube with one-way valve from kit and close the white clamp.
- c: Tighten white-blue connector on the intermediary irrigation tube.



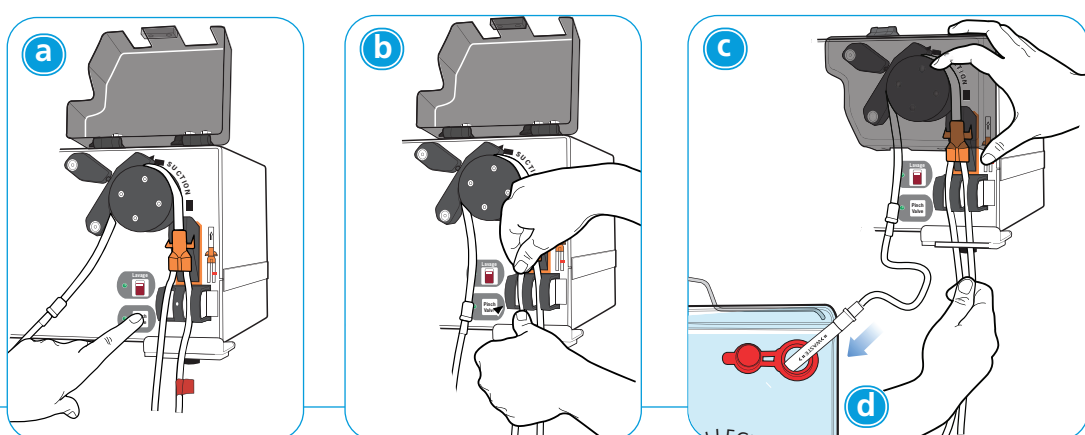
- 2 a: Twist blue cap off the intermediary irrigation tube.
- b: Connect the One Day Set irrigation tube to the intermediary irrigation tube with one-way valve by screwing the two blue connector ends together until snug.
- c: Open both clamps until fluid exits the tube. Close the clamp nearest the end of the tube after fluid is released and place in the sterile field.



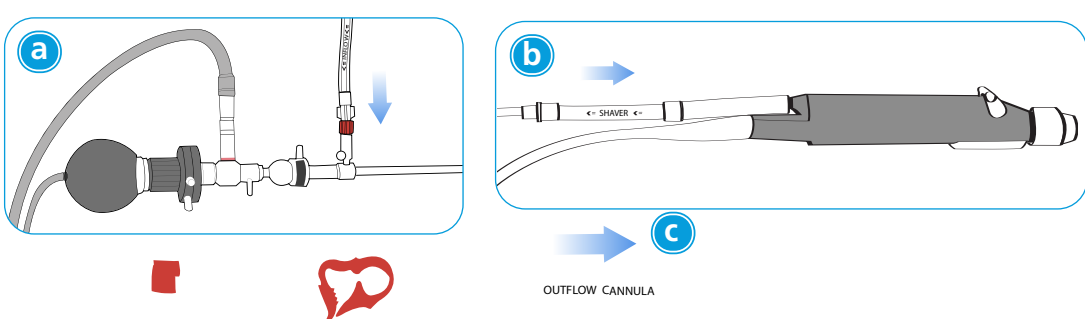
- 3 a: Lift roller arm, then slide the orange part of the tube into the auto-locking device on the pump.
- b: Place and center the tube around the roller. Pull on the tube and close the tension rocker arm against the tube.
- c: Push the right tube into the right pinch valve with both thumbs.



- 4 a: Press the **PINCH VALVE** button. Pinch valve will shift to the left for five (5) seconds.
- b: Push the left tube into the left pinch valve with both thumbs. Pinch valve will move back to the right after five (5) seconds.
- c: Close the cover and place both patient set tubes behind the tube holder.
- d: Place the tube marked **WASTE** into the waste collection bag.

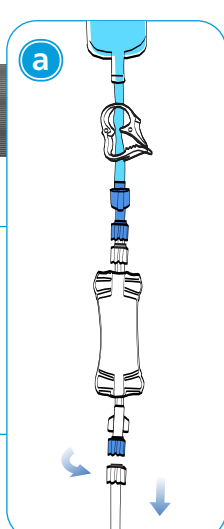


- 5 a: Connect the tube marked **INFLOW** to the arthroscopic scope sheath.
- b: Connect the tube marked **SHAVER** to the arthroscopic shaver.
- c: Connect the tube marked **OUTFLOW CANNULA** to the suction or working cannula and open all clamps on the tubes.



## C. Set up for next operation

- 1 a: If other surgeries are scheduled for the same operating day, disconnect the blue luer lock of the intermediary tubing and leave the one-way valve attached to the irrigation tubing at the end of each surgery.



- 2 a: At the start of a new surgery remove the old one-way valve.
- b: IMMEDIATELY connect the blue luer lock of the **NEW** patient set intermediary tubing with one-way valve to the blue luer lock of the One Day Set irrigation tubing.
- c: **WARNING!** Never attach a one-way valve to another.

