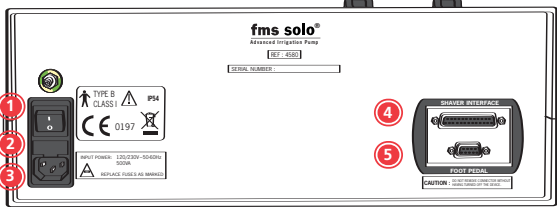


# fms solo® Parts List

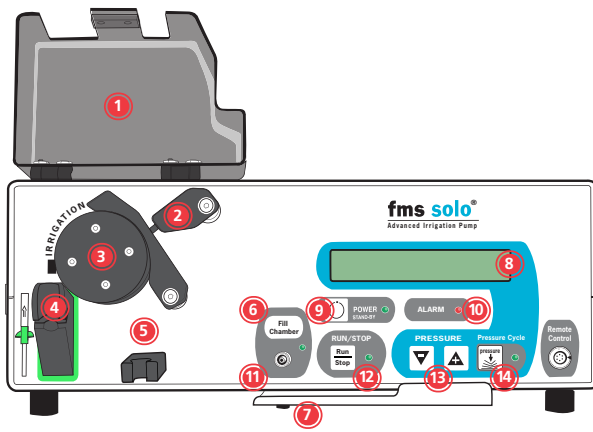
## Ports and Connectors on the Back

- 1 On/Off Switch
- 2 Fuses
- 3 Power Socket
- 4 Shaver Interface Port
- 5 Foot Pedal Port



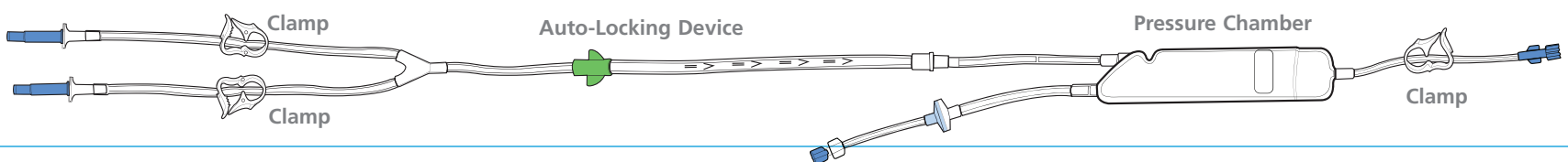
## Basic Features on the Front

- Transparent Safety Cover 1
- Tension Rocker Arm 2
- Irrigation Roller Pump 3
- Irrigation Auto-Locking Port 4
- Tube Holder 5
- Fill Chamber Button 6
- Fill Chamber Holder 7

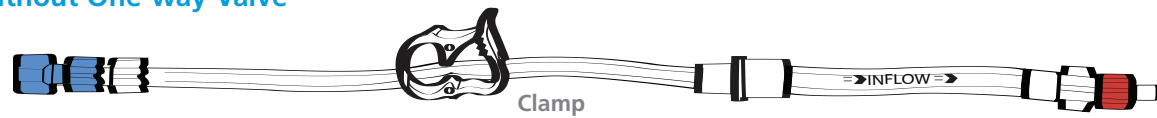


- 8 Pressure Display
- 9 Power Button
- 10 Alarm
- 11 Pressure Transducer Port
- 12 Pump Run/Stop Button
- 13 Pressure Adjustment Buttons
- 14 Pressure Cycle Button

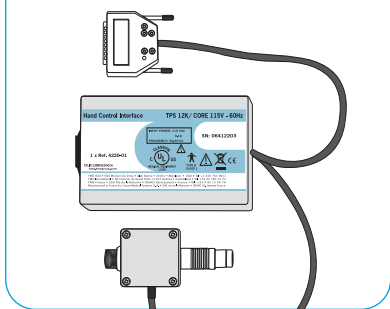
## Irrigation Tube



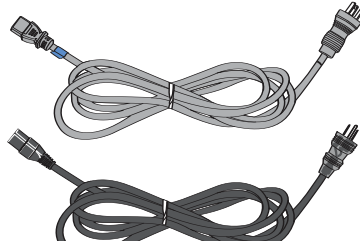
## Intermediary Irrigation Tube without One-way Valve



## Shaver Interface Cable

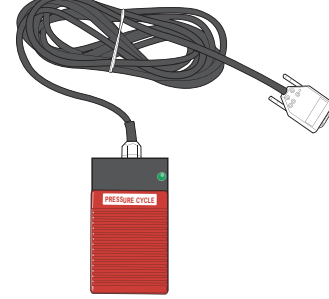


## fms solo® Power Cable

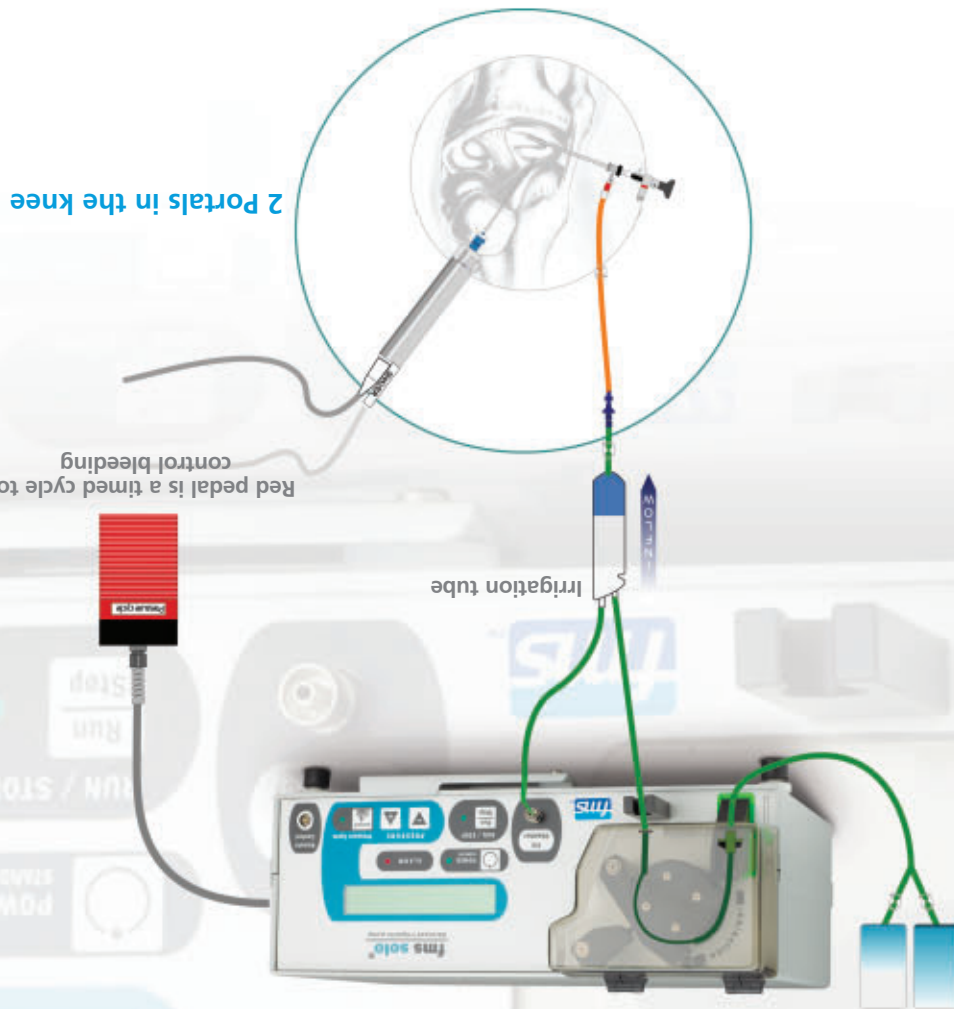


## Shaver Interface Power Cable

## Foot Pedal



1-800-382-4682 | [www.depuymitek.com](http://www.depuymitek.com)  
 ©DePuy Mitek, Inc. 2008. All rights reserved. Printed in the USA.  
 P/N 901012, Rev. A 03/08



fms solo®  
 Setup Diagram

## QUICK SETUP GUIDE

# fms solo®

Fluid Management System with Shaver Interface  
 (Disposable Tubing Setup)

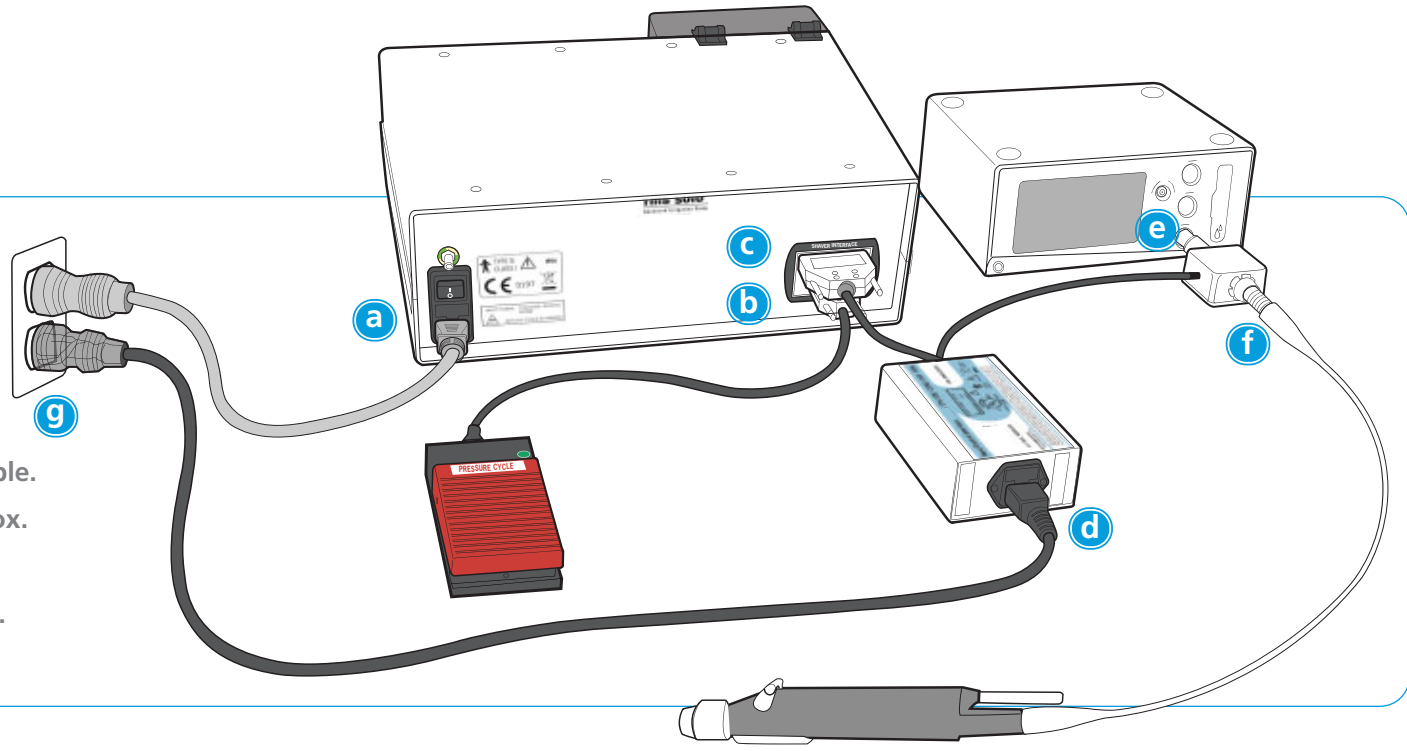


Sterile procedures should be followed wherever appropriate.  
 (Reference Product Manuals and Instructions For Use for complete instructions)

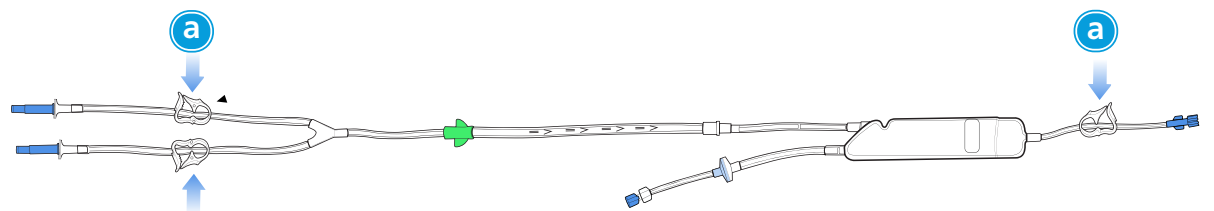


## A. Connecting the Irrigation Tube

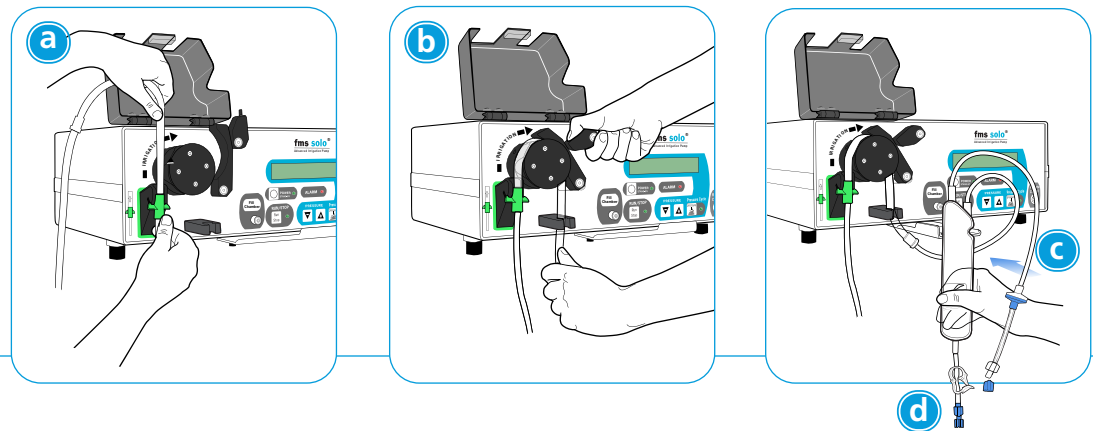
- 1 a: Insert power cable into socket.
- b: Attach the foot pedal connector to the port.
- c: Attach shaver interface connector to the port.
- d: Insert power cable into interface cable.
- e: Connect interface cable to shaver box.
- f: Connect shaver to interface cable.
- g: Insert power cables into wall socket.



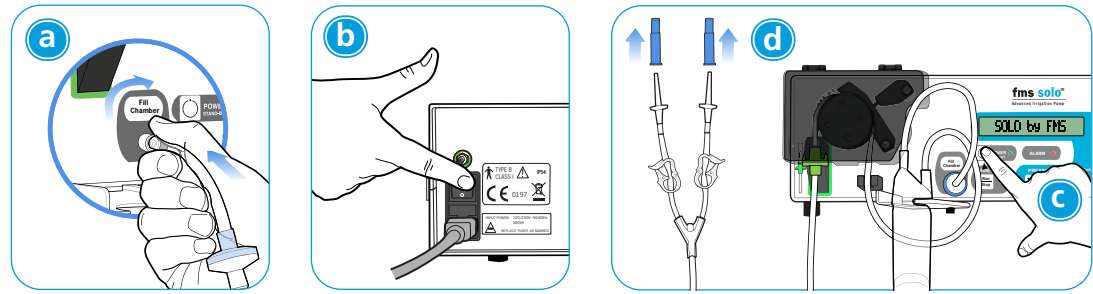
- 2 a: Remove irrigation tube from the package and close three (3) white clamps on the irrigation tube.



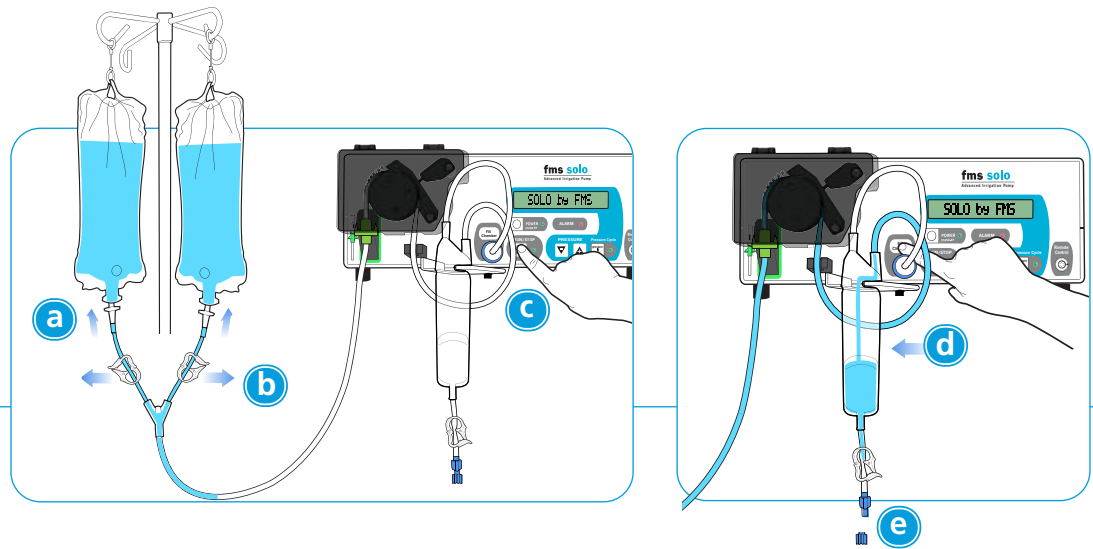
- 3 a: Lift lids and roller arm, then slide the green part of the tube into the auto-locking feature on the pump.
- b: Place and center the tube around the roller. Pull on the tube and close the tension rocker arm against the tube.
- c: Position the pressure chamber in the holder.
- d: Twist cap off of the pressure transducer tube.



- 4 a: Connect the pressure transducer tube into the fill chamber port. Turn clockwise until snug.
- b: Turn pump on by pressing I switch on back.
- c: Close lid and press POWER STAND-BY button.
- d: Remove caps off irrigation spikes.

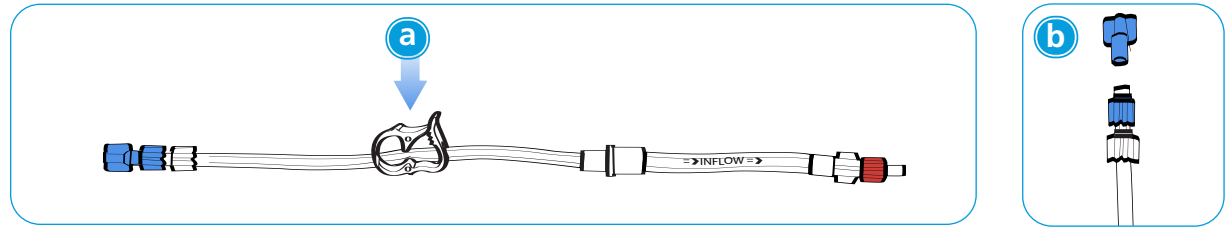


- 5 a: Insert spikes into irrigation bags.
- b: Open two (2) clamps on irrigation tubes.
- c: Press RUN STOP button. Prime pump to fifty (50).
- d: Press FILL CHAMBER button to pump fluid into the chamber. Repeat until fluid rises to indicator window (1/3 full).
- e: Twist cap off irrigation tube.

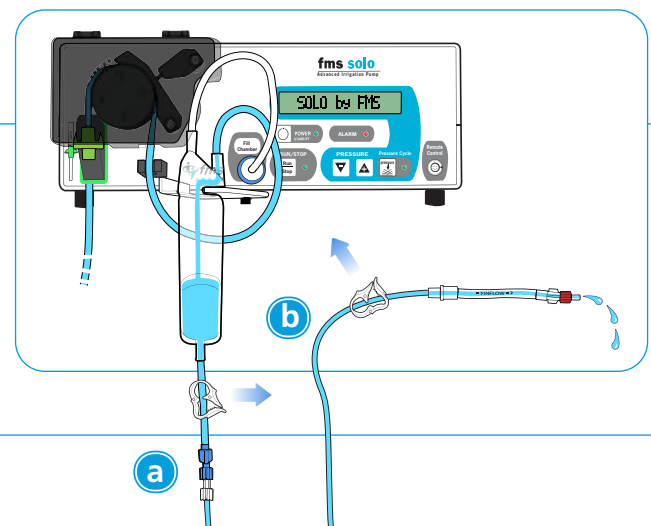


## B. Connecting the Intermediary Irrigation Tube (without One-way Valve)

- 1 a: Remove the intermediary irrigation tube without one-way valve from the package and close the white clamp.
- b: Twist blue cap off the intermediary irrigation tube.



- 2 a: Connect the irrigation tube to the intermediary irrigation tube without one-way valve by screwing the two blue connector ends together until snug.
- b: Open both clamps until fluid exits the tube. Close the clamp nearest the end of the tube after fluid is released and place in the sterile field.



- 3 a: Connect the tube marked INFLOW to the arthroscopic scope sheath.

