

CLEAR CANNULA SYSTEM

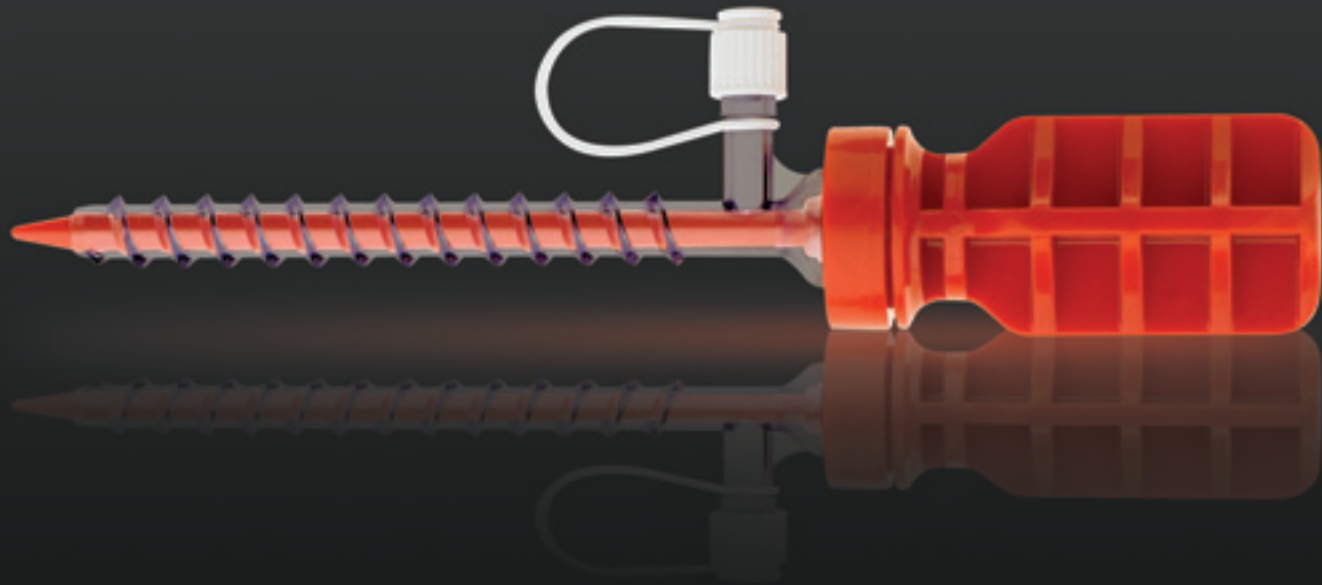
Product Information

DePuy Mitek’s new clear cannulas are packaged with color coordinated disposable obturators. Reusable obturators are also available with the following attributes: color coordinated, made of a molded silicone handle with stainless steel shafts, cannulated (4.1mm) for use with the DePuy Mitek 4.0mm switching sticks.



CLEAR CANNULA SYSTEM

The **new** fluid management solution for all your arthroscopic procedures...



- New – Triple Seal Dam
- New – Thread Pitch for Optimal Joint Security
- New – Complete Breadth of Sizes and Styles

	Cat. #	Description	Features
Smooth	214106	5.5mm x 75mm Smooth	<ul style="list-style-type: none">• Disposable cannula with disposable obturator• Sterile, single use, box of 5• For diagnostic scopes and/or simple suture management in the joint
	214114	7.0mm x 75mm Smooth	
Smooth w/ Rib	214107	5.5mm x 75mm Smooth with Distal Rib	<ul style="list-style-type: none">• Disposable cannula with disposable obturator• Sterile, single use, box of 5• Used for diagnostic scopes as well as instrument & implant and suture management in the joint. The distal rib offers “fall out” security while ease of movement of the cannula throughout the joint is assured.
	214115	7.0mm x 75mm Smooth with Distal Rib	
Threaded	214104	5.5mm x 55mm Threaded	<ul style="list-style-type: none">• Disposable cannula with disposable obturator• Sterile, single use, box of 5• Designed for maximum stability in the joint• Used for instruments / implants, suture passing and management
	214118	8.5mm x 55mm Threaded	
	214108	5.5mm x 75mm Threaded	
	214116	7.0mm x 75mm Threaded	
	214120	8.5mm x 75mm Threaded	
	214110	5.5mm x 90mm Threaded	
	214122	8.5mm x 90mm Threaded	
Reusable Obturator	214103	5.5mm x 55mm Reusable Obturator	<ul style="list-style-type: none">• Molded silicone handles with stainless steel shafts• 4.1mm cannulation• Color coordinated to each cannula
	214105	5.5mm x 75mm Reusable Obturator	
	214109	5.5mm x 90mm Reusable Obturator	
	214113	7.0mm x 75mm Reusable Obturator	
	214117	8.5mm x 55mm Reusable Obturator	
	214119	8.5mm x 75mm Reusable Obturator	
	214121	8.5mm x 90mm Reusable Obturator	
FMS Cannulas	281580	fms Suction Cannula 4.5mm (sterile, single use, box of 20)	<ul style="list-style-type: none">• For use with the DePuy Mitek fms duo®+ fluid management system• Enables optimal visualization to minimize procedure disruption
	281581	Trocar for fms suction cannula 4.5mm	
	281583	Obturator for fms suction cannula 4.5mm	
	281572	fms Suction Cannula 2.5mm (sterile, single use, Box of 20)	
	281571	Trocar for fms suction cannula 2.5mm	
	281573	Obturator for fms suction cannula 2.5mm	
	214123	4.0mm Switching Stick – blunt end/trocar tip end	
	214681	4.0mm Switching Stick – semi blunt ends	

CLEAR CANNULA SYSTEM

Your Clear Choice

- DePuy Mitek's clear cannulas offer complete procedural visualization yet they are tinted for distinction in the joint
- The enhanced thread pitch is designed to maximize cannula stabilization in the joint – push in, twist out
- Combine with DePuy Mitek's fms duo®+ fluid management system for optimal performance
- Constructed of a premium polycarbonate with no latex in the product or the packaging
- The clear cannula system offers the complete breadth of sizes and styles for all your arthroscopic needs:
 - Diameters: 5.5mm, 7.0mm, 8.5mm
 - Lengths: 55mm, 75mm, 90mm
 - Styles: smooth, smooth with distal rib, threaded

New Triple Seal Dam



The new triple seal dam provides both optimal fluid retention with minimal leakage and easy passage of suture and instruments.



FMS Outflow Cannulas

In addition to the clear cannula system, DePuy Mitek offers 4.5mm and 2.5mm outflow cannulas with obturator or trocar. These dedicated outflow cannulas enable the continuous flow feature of the fms duo®+ providing optimal visualization, pressure control and inflow-outflow performance in arthroscopic shoulder, knee and small joint procedures.