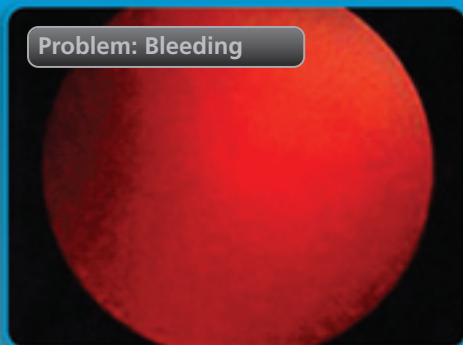
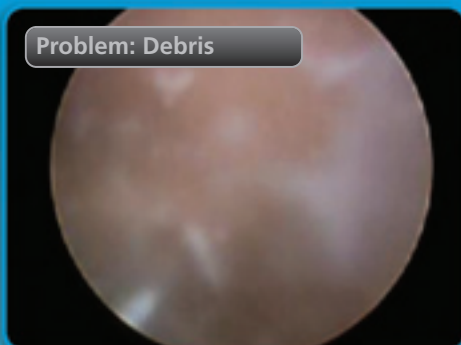


# Clarity & Control

Problem: Bleeding



Problem: Debris



Solution: FMS Clarity



When choosing the fms duo+ to maintain clarity in the operative field, the focus becomes the patient and the procedure - not operating the pump. You're in control when conditions change, allowing you to increase pressure or flow at a moment's notice - providing a clear field of vision.

- Decreases the **surgeon's** concern of extravasation and poor visualization
- Offers easy set-up and minimal prep time for **operating room staff** efficiencies
- Increases the opportunity for significant cost savings to the **hospital**

# Concentrate on the Patient, not the Pump

## FEATURES & BENEFITS

- Enables optimal visibility and minimizes procedure disruption
- Inflow and outflow control in a unique system – Does not use wall suction
- Controls pressure and flow independently to address extravasation concerns
- Red Pedal – lavage mode controls bleeding
- Blue Pedal – flow control to clear debris without increasing pressure
- Interfaces with most shavers automatically controlling your shaver suction
- Pinch valve selects shaver or cannula suction automatically, reducing labor-intensive manipulations
- Easy setup with color coded tube sets
- Provides significant operating room efficiencies, such as reduced tourniquet use and shortened procedure times to lower costs



## ORDERING INFORMATION

Description	Ref.
fms duo+ Console	284580
fms 4-way Foot Pedal	284176
fms 2-way Foot Pedal	284172
Tornado Shaver**	288022

Description	Ref.
One Day Set Irrigation Tubing	284504
Patient Set Tubing without One-way Valve	284510
Patient Set Tubing with One-way Valve	284549

\*\*Shaver and handpiece may not be offered in some markets.

Contact your DePuy Mitek representative for scope sheaths, shaver interface cables, cannulas and other fms duo+ accessories.